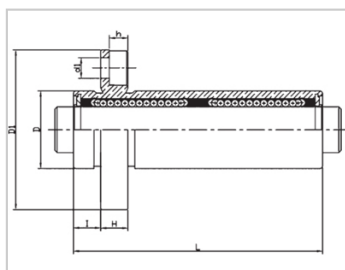
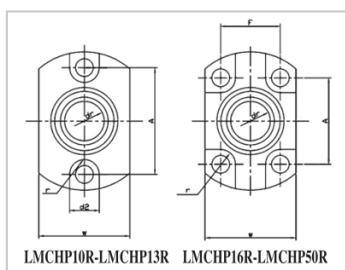


Compact bearing series

LMCHP LAUU-LMCHP12LAUU|LML73-d12

参数信息:



Model No. :

YTP (nickel plated) : LMCHP1
2LAUU

YHDA (nickel plated) : LML73-d1
2

NUMBER OF BALL
ROWS :

Column : 6

Boundary
dimensions :

INSCRIBED CIRCLE
DIAMETER_{dr} : 12

INSCRIBED CIRCLE
DIAMETER
TOLERANCE : 0-0.010

OUTER
DIAMETER_D : 19

Outer
DiameterTolerance : 0-0.016

Length_L : 57

LengthTolerance : ± 0.3

I : 6

Flange_{D1} : 38

Flange_W : 25

Flange_H : 6

Flange_A : 30

Flange_F : -

HOLE FOR
ATTACHMENT_{d1} : 4.5

HOLE FOR
ATTACHMENT_{d2} : 7.5

HOLE FOR
ATTACHMENT_h : 4.1

HOLE FOR : 3.75

ATTACHMENTr :

SOUAR- ENESS : 0.015

Eccentricity (MAX.) : 0.015

Basic Load Rating :

C(kgf) : 60.8

Co(kgf) : 89.9

Weight :

(g) : 87

介绍:

| Model No. | Producti on Standards | Outer Coving | | | Balls | | Retainer | | Seals Material | |
|------------|-----------------------|--------------|------------------|-----------------------------|----------|------------------|----------|----------------------------|----------------|----------------|
| | | Material | Hardness (HRC) | Treatmen t Of Surfaces | Material | Hardness (HRC) | Material | Holder Working Temperature | Skeleton | Rubber |
| LMCHP LUU | GB/T169 40-2012 | GCr15 | 60 ~ 64 | - | GCr15 | 61 ~ 66 | Resin | -20 ~ 80 | 65Mn | Nitrile Rubber |
| LMCHP LAUU | GB/T169 40-2012 | GCr15 | 60 ~ 64 | Electroles s Nickel Plating | GCr15 | 61 ~ 66 | Resin | -20 ~ 80 | 65Mn | Nitrile Rubber |

Note: Not produced, for reference only.