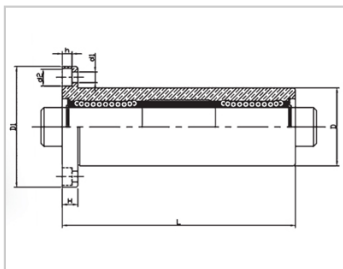
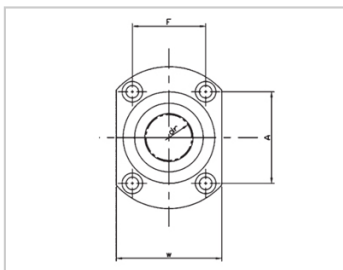
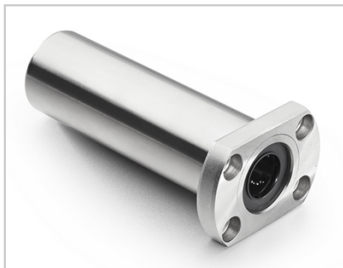


Triple lengthened bearing series

LMH TAM-LMH30TAMLHKCLF30

参数信息:



Model No. :

YTP (steel protection nickel plating) :	LMH30TAM
MISUMI (steel protection nickel plating) :	LHKCLF30

NUMBER OF BALL ROWS :

Column :	6
----------	---

Boundary dimensions :

INSCRIBED CIRCLE DIAMETER _{dr} :	30
INSCRIBED CIRCLE DIAMETER TOLERANCE :	0-0.018
OUTER DIAMETER _D :	52
Outer DiameterTolerance :	0-0.022
Length _L :	184
LengthTolerance :	± 0.3
Flange _{D1} :	82
Flange _W :	58
Flange _H :	10
Flange _A :	55
Flange _F :	38
HOLE FOR ATTACHMENT _{d1} :	6.6
HOLE FOR ATTACHMENT _{d2} :	11
HOLE FOR ATTACHMENT _H :	6.1
SOUAR- ENESS :	0.025

Eccentricity (MAX.) : 0.025

Basic Load Rating :

C(kgf) : 254

Co(kgf) : 560

Weight :

(g) : 1567

介绍:

Model	Producti on standard	Shell			rolling ball		Retainer		Accessory (seal) material	
		Material	Hardness (HRC)	Surface treatment	Material	Hardness (HRC)	Material	Using te mperatur e	Skeleton	Rubber
LMH TUU	GB/T169 40-2012	GCr15	60 ~ 64	-	GCr15	61 ~ 66	Resin	-20 ~ 80	65Mn	Nitrile rubber
LMH TAUU	GB/T169 40-2012	GCr15	60 ~ 64	Electroless nickel plating	GCr15	61 ~ 66	Resin	-20 ~ 80	65Mn	Nitrile rubber
LMH TM	GB/T169 40-2012	GCr15	60 ~ 64	-	GCr15	61 ~ 66	304 stainless steel	-20 ~ 80	65Mn	-
LMH TAM	GB/T169 40-2012	GCr15	60 ~ 64	Electroless nickel plating	GCr15	61 ~ 66	304 stainless steel	-20 ~ 80	65Mn	-

Note: The inner holes are 6, 8, 10, 13, 35, 40, not produced, for reference only.