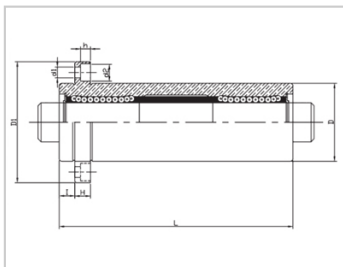
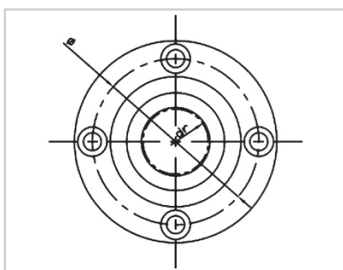


Triple lengthened bearing series

LMFP TM-LMFP12TMLHKIRNLF12

参数信息:



Model No. :

YTP (Steel Protection) :	LMFP12T M
MISUMI (Steel Insurance) :	LHKIRNL F12

NUMBER OF BALL ROWS :

Column :	4
----------	---

Boundary dimensions :

INSCRIBED CIRCLE DIAMETER _{dr} :	12
INSCRIBED CIRCLE DIAMETER TOLERANCE :	0-0.015
OUTER DIAMETER _D :	26
Outer Diameter Tolerance :	0-0.016
Length _L :	86
Length Tolerance :	± 0.3
I :	6
Flange _{D1} :	46
Flange _H :	6
Flange :	36
HOLE FOR ATTACHMENT _{d1} :	4.5
HOLE FOR ATTACHMENT _{d2} :	7.5
HOLE FOR ATTACHMENT _h :	4.1
SOURCING :	0.02
Eccentricity (MAX.) :	0.02

Basic Load Rating :

C(kgf) : 83

Co(kgf) : 160

Weight :

(g) : 248

介绍:

Model	Producti on standard	Shell			rolling ball		Retainer		Accessory (seal) material		
		Material	Hardness (HRC)	Surface treatment	Material	Hardness (HRC)	Material	Using te mperatur e	Skeleton	Rubber	
LMFP TUU	GB/T169 40-2012	GCr15	60 ~ 64	-	GCr15	61 ~ 66	Resin	-20 ~ 80	65Mn	Nitrile rubber	
LMFP TAUU	GB/T169 40-2012	GCr15	60 ~ 64	Electroless nickel plating	GCr15	61 ~ 66	Resin	-20 ~ 80	65Mn	Nitrile rubber	
LMFP TM	GB/T169 40-2012	GCr15	60 ~ 64	-	GCr15	61 ~ 66	304 stainless steel	-20 ~ 80	65Mn	-	
LMFP TAM	GB/T169 40-2012	GCr15	60 ~ 64	Electroless nickel plating	GCr15	61 ~ 66	304 stainless steel	-20 ~ 80	65Mn	-	

Note: The inner holes are 6, 8, 10, 13, 35, 40, not produced, for reference only.