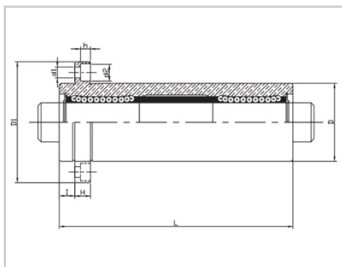
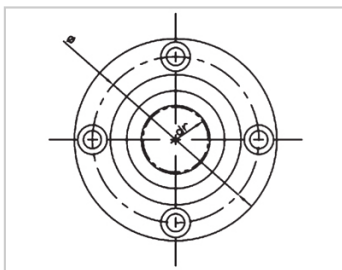
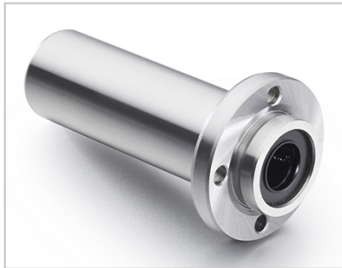


Triple lengthened bearing series

LMFP TM-LMFP30TMLHKIRNLF30

参数信息:



Model No. :

YTP (Steel Protection) :	LMFP30T M
MISUMI (Steel Insurance) :	LHKIRNL F30
NUMBER OF BALL ROWS :	
Column :	6
Boundary dimensions :	
INSCRIBED CIRCLE DIAMETER <sub>dr</sub> :	30
INSCRIBED CIRCLE DIAMETER TOLERANCE :	0-0.018
OUTER DIAMETER <sub>D</sub> :	52
Outer DiameterTolerance :	0-0.022
Length <sub>L</sub> :	184
LengthTolerance :	± 0.3
I :	10
Flange <sub>D1</sub> :	82
Flange <sub>H</sub> :	10
Flange :	67
HOLE FOR ATTACHMENT <sub>d1</sub> :	6.6
HOLE FOR ATTACHMENT <sub>d2</sub> :	11
HOLE FOR ATTACHMENT <sub>h</sub> :	6.1
SOUAR- ENESS :	0.025
Eccentricity (MAX.) :	0.025

Basic Load Rating :

C(kgf) : 254

Co(kgf) : 560

Weight :

(g) : 1636

介绍:

Model	Producti on standard	Shell			rolling ball		Retainer		Accessory (seal) material		
		Material	Hardness (HRC)	Surface treatment	Material	Hardness (HRC)	Material	Using te mperatur e	Skeleton	Rubber	
LMFP TUU	GB/T169 40-2012	GCr15	60 ~ 64	-	GCr15	61 ~ 66	Resin	-20 ~ 80	65Mn	Nitrile rubber	
LMFP TAUU	GB/T169 40-2012	GCr15	60 ~ 64	Electroless nickel plating	GCr15	61 ~ 66	Resin	-20 ~ 80	65Mn	Nitrile rubber	
LMFP TM	GB/T169 40-2012	GCr15	60 ~ 64	-	GCr15	61 ~ 66	304 stainless steel	-20 ~ 80	65Mn	-	
LMFP TAM	GB/T169 40-2012	GCr15	60 ~ 64	Electroless nickel plating	GCr15	61 ~ 66	304 stainless steel	-20 ~ 80	65Mn	-	

Note: The inner holes are 6, 8, 10, 13, 35, 40, not produced, for reference only.