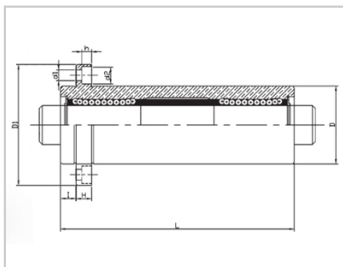
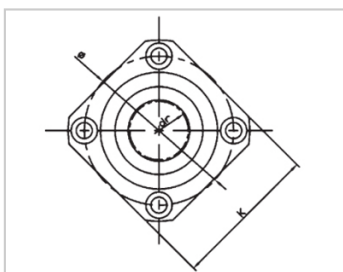


Triple lengthened bearing series

LMKP TM-LMKP8TMLHKISNLF8

参数信息:



model :

YTP (Steel Protection) :	LMKP8T M
MISUMI (Steel Insurance) :	LHKISNL F8
NUMBER OF BALL ROWS :	
Column :	4
Boundary dimensions :	
INSCRIBED CIRCLE DIAMETER _{dr} :	8
INSCRIBED CIRCLE DIAMETER TOLERANCE :	0-0.012
OUTER DIAMETER _D :	19
Outer DiameterTolerance :	0-0.016
Length _L :	68
LengthTolerance :	± 0.3
I :	6
Flange _{D1} :	40
Flange _K :	30
Flange _H :	6
Flange :	29
HOLE FOR ATTACHMENT _{d1} :	4.5
HOLE FOR ATTACHMENT _{d2} :	7.5
HOLE FOR ATTACHMENT _h :	4.1
SOUAR- ENESS :	0.02
Eccentricity (MAX.) :	0.02

Basic Load Rating :

C(kgf) : 44

Co(kgf) : 80

Weight :

(g) : 117

介绍:

Model	Producti on standard	Shell			rolling ball		Retainer		Accessory (seal) material	
		Material	Hardness (HRC)	Surface treatment	Material	Hardness (HRC)	Material	Using te mperatur e	Skeleton	Rubber
LMKP TUU	GB/T169 40-2012	GCr15	60 ~ 64	-	GCr15	61 ~ 66	Resin	-20 ~ 80	65Mn	Nitrile rubber
LMKP TAUU	GB/T169 40-2012	GCr15	60 ~ 64	Electroless nickel plating	GCr15	61 ~ 66	Resin	-20 ~ 80	65Mn	Nitrile rubber
LMKP TM	GB/T169 40-2012	GCr15	60 ~ 64	-	GCr15	61 ~ 66	304 stainless steel	-20 ~ 80	65Mn	-
LMKP TAM	GB/T169 40-2012	GCr15	60 ~ 64	Electroless nickel plating	GCr15	61 ~ 66	304 stainless steel	-20 ~ 80	65Mn	-

Note: The inner holes are 6, 8, 10, 13, 35, 40, not produced, for reference only.