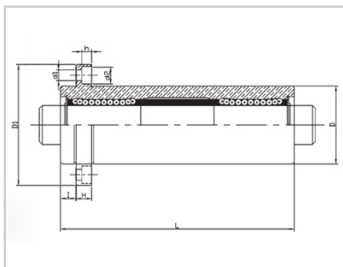
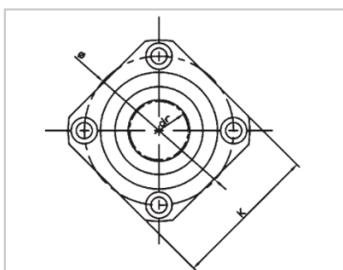


Triple lengthened bearing series

LMKP TM-LMKP20TMLHKISNLF20

参数信息:



model :

YTP (Steel Protection) :	LMKP20T M
MISUMI (Steel Insurance) :	LHKISNL F20
NUMBER OF BALL ROWS :	
Column :	5
Boundary dimensions :	
INSCRIBED CIRCLE DIAMETER _{dr} :	20
INSCRIBED CIRCLE DIAMETER TOLERANCE :	0-0.018
OUTER DIAMETER _D :	40
Outer DiameterTolerance :	0-0.019
Length _L :	120
LengthTolerance :	± 0.3
I :	8
Flange _{D1} :	62
Flange _K :	50
Flange _H :	8
Flange :	51
HOLE FOR ATTACHMENT _{d1} :	5.5
HOLE FOR ATTACHMENT _{d2} :	9
HOLE FOR ATTACHMENT _h :	5.1
SOUAR- ENESS :	0.025
Eccentricity (MAX.) :	0.025

Basic Load Rating :

C(kgf) : 143

Co(kgf) : 280

Weight :

(g) : 714

介绍:

Model	Producti on standard	Shell			rolling ball		Retainer		Accessory (seal) material		
		Material	Hardness (HRC)	Surface treatment	Material	Hardness (HRC)	Material	Using te mperatur e	Skeleton	Rubber	
LMKP TUU	GB/T169 40-2012	GCr15	60 ~ 64	-	GCr15	61 ~ 66	Resin	-20 ~ 80	65Mn	Nitrile rubber	
LMKP TAUU	GB/T169 40-2012	GCr15	60 ~ 64	Electroless nickel plating	GCr15	61 ~ 66	Resin	-20 ~ 80	65Mn	Nitrile rubber	
LMKP TM	GB/T169 40-2012	GCr15	60 ~ 64	-	GCr15	61 ~ 66	304 stainless steel	-20 ~ 80	65Mn	-	
LMKP TAM	GB/T169 40-2012	GCr15	60 ~ 64	Electroless nickel plating	GCr15	61 ~ 66	304 stainless steel	-20 ~ 80	65Mn	-	

Note: The inner holes are 6, 8, 10, 13, 35, 40, not produced, for reference only.