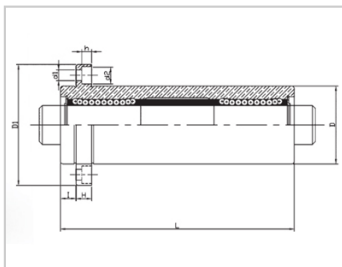
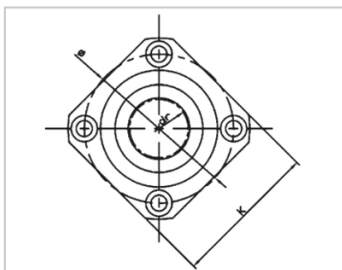


Triple lengthened bearing series

LMKP TM-LMKP30TMLHKISNLF30

参数信息:



model :

YTP (Steel Protection) :	LMKP30T M
MISUMI (Steel Insurance) :	LHKISNL F30

NUMBER OF BALL ROWS :

Column : 6

Boundary dimensions :

INSCRIBED CIRCLE DIAMETER<sub>dr</sub> : 30

INSCRIBED CIRCLE DIAMETER TOLERANCE : 0-0.018

OUTER DIAMETER<sub>D</sub> : 52

Outer DiameterTolerance : 0-0.022

Length<sub>L</sub> : 184

LengthTolerance : ± 0.3

I : 10

Flange<sub>D1</sub> : 82

Flange<sub>K</sub> : 64

Flange<sub>H</sub> : 10

Flange : 67

HOLE FOR ATTACHMENT<sub>d1</sub> : 6.6

HOLE FOR ATTACHMENT<sub>d2</sub> : 11

HOLE FOR ATTACHMENT<sub>h</sub> : 6.1

SOUAR- ENESS : 0.025

Eccentricity (MAX.) : 0.025

Basic Load Rating :

C(kgf) : 254

Co(kgf) : 560

Weight :

(g) : 1543

介绍:

Model	Producti on standard	Shell			rolling ball		Retainer		Accessory (seal) material	
		Material	Hardness (HRC)	Surface treatment	Material	Hardness (HRC)	Material	Using te mperatur e	Skeleton	Rubber
LMKP TUU	GB/T169 40-2012	GCr15	60 ~ 64	-	GCr15	61 ~ 66	Resin	-20 ~ 80	65Mn	Nitrile rubber
LMKP TAUU	GB/T169 40-2012	GCr15	60 ~ 64	Electroless nickel plating	GCr15	61 ~ 66	Resin	-20 ~ 80	65Mn	Nitrile rubber
LMKP TM	GB/T169 40-2012	GCr15	60 ~ 64	-	GCr15	61 ~ 66	304 stainless steel	-20 ~ 80	65Mn	-
LMKP TAM	GB/T169 40-2012	GCr15	60 ~ 64	Electroless nickel plating	GCr15	61 ~ 66	304 stainless steel	-20 ~ 80	65Mn	-

Note: The inner holes are 6, 8, 10, 13, 35, 40, not produced, for reference only.