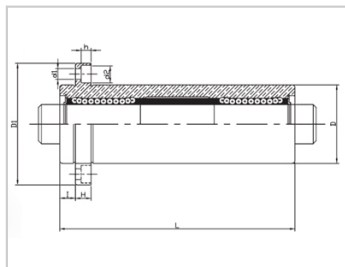
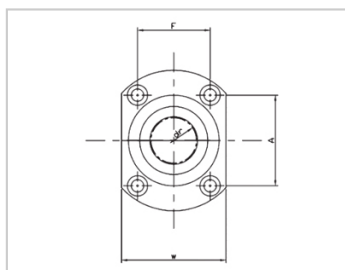


Triple lengthened bearing series

LMHP TAM-LMHP35TAMLHKICLF35

参数信息:



Model No. :

YTP (steel protection nickel plating) :	LMHP35 TAM
MISUMI (steel protection nickel plating) :	LHKICLF 35

NUMBER OF BALL ROWS :

Column : 6

Boundary dimensions :

INSCRIBED CIRCLE DIAMETER _{dr} :	35
INSCRIBED CIRCLE DIAMETER TOLERANCE :	0-0.021
OUTER DIAMETER _{Dr} :	60
Outer DiameterTolerance :	-
Length _L :	200
LengthTolerance :	± 0.3
I :	13
Flange _{D1} :	96
Flange _W :	66
Flange _H :	13
Flange _A :	64
Flange _F :	45
HOLE FOR ATTACHMENT _{d1} :	9
HOLE FOR ATTACHMENT _{d2} :	14
HOLE FOR ATTACHMENT _h :	8.1

SOUAR- ENESS :	0.03
Eccentricity (MAX.) :	0.03
Basic Load Rating :	
C(kgf) :	270
Co(kgf) :	640
Weight :	
(g) :	2433

介绍:

Model	Producti on standard	Shell			rolling ball		Retainer		Accessory (seal) material		
		Material	Hardness (HRC)	Surface treatment	Material	Hardness (HRC)	Material	Using te mperatur e	Skeleton	Rubber	
LMHP TUU	GB/T169 40-2012	GCr15	60 ~ 64	-	GCr15	61 ~ 66	Resin	-20 ~ 80	65Mn	Nitrile rubber	
LMHP TAUU	GB/T169 40-2012	GCr15	60 ~ 64	Electroless nickel plating	GCr15	61 ~ 66	Resin	-20 ~ 80	65Mn	Nitrile rubber	
LMHP TM	GB/T169 40-2012	GCr15	60 ~ 64	-	GCr15	61 ~ 66	304 stainless steel	-20 ~ 80	65Mn	-	
LMHP TAM	GB/T169 40-2012	GCr15	60 ~ 64	Electroless nickel plating	GCr15	61 ~ 66	304 stainless steel	-20 ~ 80	65Mn	-	

Note: The inner holes are 6, 8, 10, 13, 35, 40, not produced, for reference only.