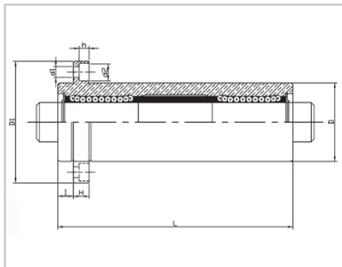
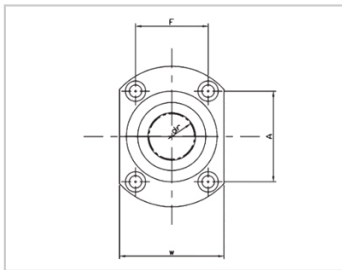
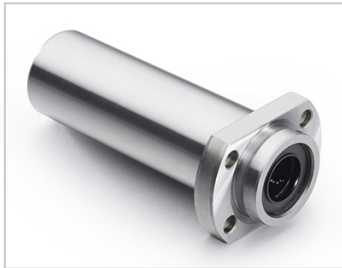


Triple lengthened bearing series

LMHP TAM-LMHP8TAMLHKICLF8

参数信息:



Model No. :

| | |
|--|----------|
| YTP (steel protection nickel plating) : | LMHP8TAM |
| MISUMI (steel protection nickel plating) : | LHKICLF8 |

NUMBER OF BALL ROWS :

Column : 4

Boundary dimensions :

| | |
|---|---------|
| INSCRIBED CIRCLE DIAMETER _{dr} : | 8 |
| INSCRIBED CIRCLE DIAMETER TOLERANCE : | 0-0.012 |
| OUTER DIAMETER _{Dr} : | 19 |
| Outer Diameter Tolerance : | 0-0.016 |
| Length _L : | 68 |
| Length Tolerance : | ± 0.3 |
| I : | 6 |
| Flange _{D1} : | 40 |
| Flange _W : | 25 |
| Flange _H : | 6 |
| Flange _A : | - |
| Flange _F : | - |
| HOLE FOR ATTACHMENT _{d1} : | 4.5 |
| HOLE FOR ATTACHMENT _{d2} : | 7.5 |
| HOLE FOR ATTACHMENT _h : | 4.1 |

| | |
|-----------------------|------|
| SOUAR- ENESS : | 0.02 |
| Eccentricity (MAX.) : | 0.02 |
| Basic Load Rating : | |
| C(kgf) : | 44 |
| Co(kgf) : | 80 |
| Weight : | |
| (g) : | - |

介绍:

| Model | Producti on standard | Shell | | | rolling ball | | Retainer | | Accessory (seal) material | | |
|-----------|----------------------|----------|----------------|----------------------------|--------------|----------------|---------------------|---------------------|---------------------------|----------------|--|
| | | Material | Hardness (HRC) | Surface treatment | Material | Hardness (HRC) | Material | Using te mperatur e | Skeleton | Rubber | |
| LMHP TUU | GB/T169 40-2012 | GCr15 | 60 ~ 64 | - | GCr15 | 61 ~ 66 | Resin | -20 ~ 80 | 65Mn | Nitrile rubber | |
| LMHP TAUU | GB/T169 40-2012 | GCr15 | 60 ~ 64 | Electroless nickel plating | GCr15 | 61 ~ 66 | Resin | -20 ~ 80 | 65Mn | Nitrile rubber | |
| LMHP TM | GB/T169 40-2012 | GCr15 | 60 ~ 64 | - | GCr15 | 61 ~ 66 | 304 stainless steel | -20 ~ 80 | 65Mn | - | |
| LMHP TAM | GB/T169 40-2012 | GCr15 | 60 ~ 64 | Electroless nickel plating | GCr15 | 61 ~ 66 | 304 stainless steel | -20 ~ 80 | 65Mn | - | |

Note: The inner holes are 6, 8, 10, 13, 35, 40, not produced, for reference only.