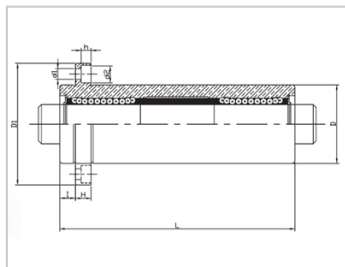
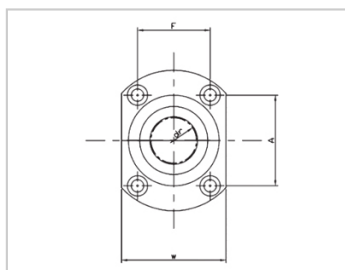


Triple lengthened bearing series

LMHP TAM-LMHP12TAMLHKICLF12

参数信息:



Model No. :

YTP (steel protection nickel plating) :	LMHP12 TAM
MISUMI (steel protection nickel plating) :	LHKICLF 12

NUMBER OF BALL ROWS :

Column : 4

Boundary dimensions :

INSCRIBED CIRCLE DIAMETER <sub>dr</sub> :	12
INSCRIBED CIRCLE DIAMETER TOLERANCE :	0-0.015
OUTER DIAMETER <sub>D</sub> :	26
Outer Diameter Tolerance :	0-0.016
Length <sub>L</sub> :	86
Length Tolerance :	± 0.3
I :	6
Flange <sub>D1</sub> :	46
Flange <sub>W</sub> :	32
Flange <sub>H</sub> :	6
Flange <sub>A</sub> :	-
Flange <sub>F</sub> :	-
HOLE FOR ATTACHMENT <sub>d1</sub> :	4.5
HOLE FOR ATTACHMENT <sub>d2</sub> :	7.5
HOLE FOR ATTACHMENT <sub>h</sub> :	4.1

SOUAR- ENESS :	0.02
Eccentricity (MAX.) :	0.02
Basic Load Rating :	
C(kgf) :	83
Co(kgf) :	160
Weight :	
(g) :	-

介绍:

Model	Producti on standard	Shell			rolling ball		Retainer		Accessory (seal) material		
		Material	Hardness (HRC)	Surface treatment	Material	Hardness (HRC)	Material	Using te mperatur e	Skeleton	Rubber	
LMHP TUU	GB/T169 40-2012	GCr15	60 ~ 64	-	GCr15	61 ~ 66	Resin	-20 ~ 80	65Mn	Nitrile rubber	
LMHP TAUU	GB/T169 40-2012	GCr15	60 ~ 64	Electroless nickel plating	GCr15	61 ~ 66	Resin	-20 ~ 80	65Mn	Nitrile rubber	
LMHP TM	GB/T169 40-2012	GCr15	60 ~ 64	-	GCr15	61 ~ 66	304 stainless steel	-20 ~ 80	65Mn	-	
LMHP TAM	GB/T169 40-2012	GCr15	60 ~ 64	Electroless nickel plating	GCr15	61 ~ 66	304 stainless steel	-20 ~ 80	65Mn	-	

Note: The inner holes are 6, 8, 10, 13, 35, 40, not produced, for reference only.