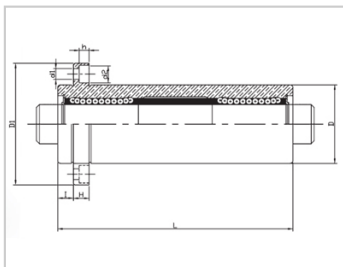
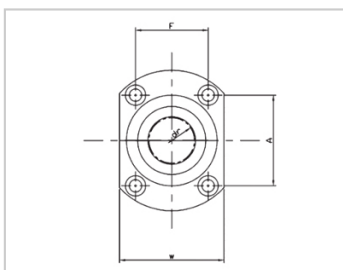


Triple lengthened bearing series

LMHP TAM-LMHP30TAMLHKICLF30

参数信息:



Model No. :

YTP (steel protection nickel plating) :	LMHP30 TAM
MISUMI (steel protection nickel plating) :	LHKICLF 30

NUMBER OF BALL ROWS :

Column : 6

Boundary dimensions :

INSCRIBED CIRCLE DIAMETER <sub>dr</sub> :	30
INSCRIBED CIRCLE DIAMETER TOLERANCE :	0-0.018
OUTER DIAMETER <sub>Dr</sub> :	52
Outer Diameter Tolerance :	0-0.022
Length <sub>L</sub> :	184
Length Tolerance :	± 0.3
I :	10
Flange <sub>D1</sub> :	82
Flange <sub>W</sub> :	58
Flange <sub>H</sub> :	10
Flange <sub>A</sub> :	55
Flange <sub>F</sub> :	38
HOLE FOR ATTACHMENT <sub>d1</sub> :	6.6
HOLE FOR ATTACHMENT <sub>d2</sub> :	11
HOLE FOR ATTACHMENT <sub>h</sub> :	6.1

SOUAR- ENESS :	0.025
Eccentricity (MAX.) :	0.025
Basic Load Rating :	
C(kgf) :	254
Co(kgf) :	560
Weight :	
(g) :	1567

介绍:

Model	Producti on standard	Shell			rolling ball		Retainer		Accessory (seal) material		
		Material	Hardness (HRC)	Surface treatment	Material	Hardness (HRC)	Material	Using te mperatur e	Skeleton	Rubber	
LMHP TUU	GB/T169 40-2012	GCr15	60 ~ 64	-	GCr15	61 ~ 66	Resin	-20 ~ 80	65Mn	Nitrile rubber	
LMHP TAUU	GB/T169 40-2012	GCr15	60 ~ 64	Electroless nickel plating	GCr15	61 ~ 66	Resin	-20 ~ 80	65Mn	Nitrile rubber	
LMHP TM	GB/T169 40-2012	GCr15	60 ~ 64	-	GCr15	61 ~ 66	304 stainless steel	-20 ~ 80	65Mn	-	
LMHP TAM	GB/T169 40-2012	GCr15	60 ~ 64	Electroless nickel plating	GCr15	61 ~ 66	304 stainless steel	-20 ~ 80	65Mn	-	

Note: The inner holes are 6, 8, 10, 13, 35, 40, not produced, for reference only.