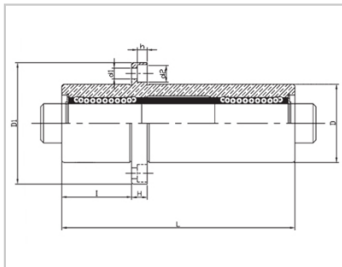
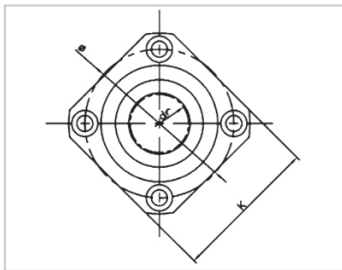
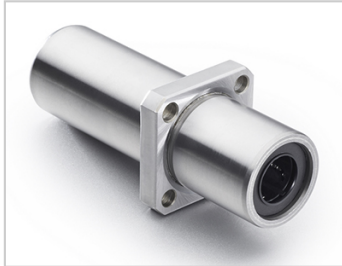


Triple lengthened bearing series

LMKC TAUU-LMKC6TAUULHKMSL6LMR72-d6

参数信息:



Model No. :

YTP (nickel plated) :	LMKC6T AUU
MISUMI (nickel plated) :	LHKMSL 6
YHDA (nickel plating) :	LMR72-d 6

NUMBER OF BALL ROWS :

Column :	4
----------	---

Boundary dimensions :

INSCRIBED CIRCLE DIAMETER _{dr} :	6
INSCRIBED CIRCLE DIAMETER TOLERANCE :	0-0.012
OUTER DIAMETER _D :	15
Outer Diameter Tolerance :	0-0.013
Length _L :	49
Length Tolerance :	± 0.3
I :	17
Flange _{D1} :	32
Flange _K :	25
Flange _H :	5
Flange :	24
HOLE FOR ATTACHMENT _{d1} :	3.5
HOLE FOR ATTACHMENT _{d2} :	6
HOLE FOR ATTACHMENT _h :	3.1

SOUAR- ENESS :	0.02
Eccentricity (MAX.) :	0.02
Basic Load Rating :	
C(kgf) :	33
Co(kgf) :	54
Weight :	
(g) :	58

介绍:

Model	Producti on standard	Shell			rolling ball		Retainer		Accessory (seal) material		
		Material	Hardness (HRC)	Surface treatment	Material	Hardness (HRC)	Material	Using te mperatur e	Skeleton	Rubber	
LMKC TUU	GB/T169 40-2012	GCr15	60 ~ 64	-	GCr15	61 ~ 66	Resin	-20 ~ 80	65Mn	Nitrile rubber	
LMKC TAUU	GB/T169 40-2012	GCr15	60 ~ 64	Electroless nickel plating	GCr15	61 ~ 66	Resin	-20 ~ 80	65Mn	Nitrile rubber	
LMKC TM	GB/T169 40-2012	GCr15	60 ~ 64	-	GCr15	61 ~ 66	304 stainless steel	-20 ~ 80	65Mn	-	
LMKC TAM	GB/T169 40-2012	GCr15	60 ~ 64	Electroless nickel plating	GCr15	61 ~ 66	304 stainless steel	-20 ~ 80	65Mn	-	

Note: The inner holes are 6, 8, 10, 13, 35, 40, not produced, for reference only.