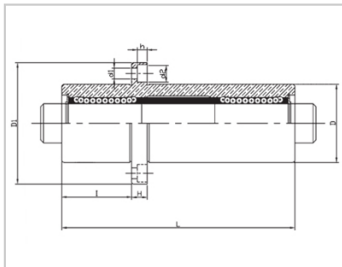
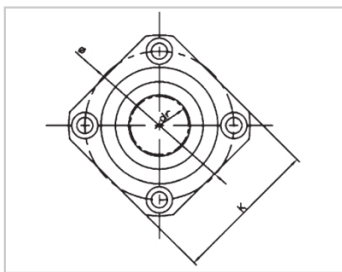
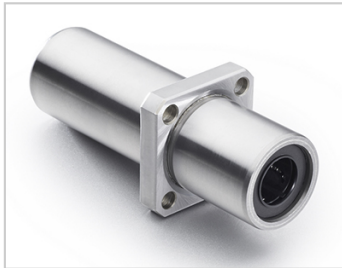


Triple lengthened bearing series

LMKC TAUU-LMKC8TAUULHKMSL8LMR72-d8

参数信息:



Model No. :

YTP (nickel plated) :	LMKC8T AUU
MISUMI (nickel plated) :	LHKMSL 8
YHDA (nickel plating) :	LMR72-d 8

NUMBER OF BALL  
ROWS :

Column : 4

Boundary  
dimensions :

INSCRIBED CIRCLE DIAMETER <sub>dr</sub> :	8
INSCRIBED CIRCLE DIAMETER TOLERANCE :	0-0.012
OUTER DIAMETER <sub>D</sub> :	19
Outer DiameterTolerance :	0-0.016
Length <sub>L</sub> :	68
LengthTolerance :	± 0.3
I :	22
Flange <sub>D1</sub> :	40
Flange <sub>K</sub> :	30
Flange <sub>H</sub> :	6
Flange :	29
HOLE FOR ATTACHMENT <sub>d1</sub> :	4.5
HOLE FOR ATTACHMENT <sub>d2</sub> :	7.5
HOLE FOR ATTACHMENT <sub>h</sub> :	4.1

SOUAR- ENESS :	0.02
Eccentricity (MAX.) :	0.02
Basic Load Rating :	
C(kgf) :	44
Co(kgf) :	80
Weight :	
(g) :	117

介绍:

Model	Producti on standard	Shell			rolling ball		Retainer		Accessory (seal) material		
		Material	Hardness (HRC)	Surface treatment	Material	Hardness (HRC)	Material	Using te mperatur e	Skeleton	Rubber	
LMKC TUU	GB/T169 40-2012	GCr15	60 ~ 64	-	GCr15	61 ~ 66	Resin	-20 ~ 80	65Mn	Nitrile rubber	
LMKC TAUU	GB/T169 40-2012	GCr15	60 ~ 64	Electroless nickel plating	GCr15	61 ~ 66	Resin	-20 ~ 80	65Mn	Nitrile rubber	
LMKC TM	GB/T169 40-2012	GCr15	60 ~ 64	-	GCr15	61 ~ 66	304 stainless steel	-20 ~ 80	65Mn	-	
LMKC TAM	GB/T169 40-2012	GCr15	60 ~ 64	Electroless nickel plating	GCr15	61 ~ 66	304 stainless steel	-20 ~ 80	65Mn	-	

Note: The inner holes are 6, 8, 10, 13, 35, 40, not produced, for reference only.