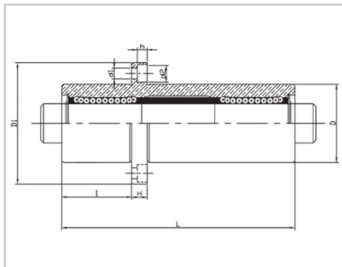
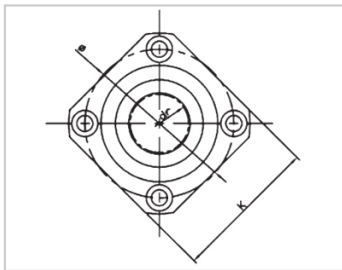
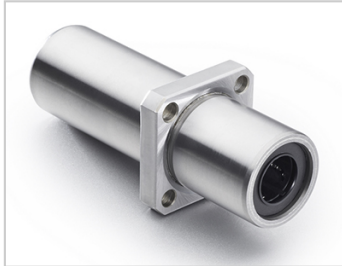


Triple lengthened bearing series

LMKC TAUU-LMKC20TAUULHKMSL20LMR72-d20

参数信息:



Model No. :

YTP (nickel plated) :	LMKC20 TAUU
MISUMI (nickel plated) :	LHKMSL 20
YHDA (nickel plating) :	LMR72-d 20

NUMBER OF BALL ROWS :

Column : 5

Boundary dimensions :

INSCRIBED CIRCLE DIAMETER <sub>dr</sub> :	20
INSCRIBED CIRCLE DIAMETER TOLERANCE :	0-0.018
OUTER DIAMETER <sub>D</sub> :	40
Outer Diameter Tolerance :	0-0.019
Length <sub>L</sub> :	120
Length Tolerance :	± 0.3
I :	40
Flange <sub>D1</sub> :	62
Flange <sub>K</sub> :	50
Flange <sub>H</sub> :	8
Flange :	51
HOLE FOR ATTACHMENT <sub>d1</sub> :	5.5
HOLE FOR ATTACHMENT <sub>d2</sub> :	9
HOLE FOR ATTACHMENT <sub>h</sub> :	5.1

SOUAR- ENESS :	0.025
Eccentricity (MAX.) :	0.025
Basic Load Rating :	
C(kgf) :	143
Co(kgf) :	280
Weight :	
(g) :	714

介绍:

Model	Producti on standard	Shell			rolling ball		Retainer		Accessory (seal) material	
		Material	Hardness (HRC)	Surface treatment	Material	Hardness (HRC)	Material	Using te mperatur e	Skeleton	Rubber
LMKC TUU	GB/T169 40-2012	GCr15	60 ~ 64	-	GCr15	61 ~ 66	Resin	-20 ~ 80	65Mn	Nitrile rubber
LMKC TAUU	GB/T169 40-2012	GCr15	60 ~ 64	Electroless nickel plating	GCr15	61 ~ 66	Resin	-20 ~ 80	65Mn	Nitrile rubber
LMKC TM	GB/T169 40-2012	GCr15	60 ~ 64	-	GCr15	61 ~ 66	304 stainless steel	-20 ~ 80	65Mn	-
LMKC TAM	GB/T169 40-2012	GCr15	60 ~ 64	Electroless nickel plating	GCr15	61 ~ 66	304 stainless steel	-20 ~ 80	65Mn	-

Note: The inner holes are 6, 8, 10, 13, 35, 40, not produced, for reference only.