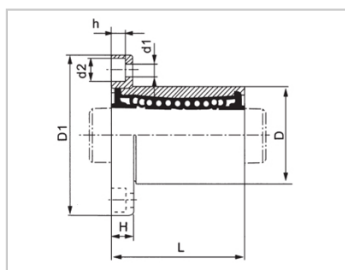
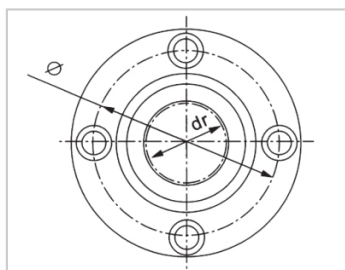


Linear flange bearing series

LMF -LMF100LHFR100-NLME01-d100

参数信息:



YTP :	LMF100
MISUMI :	LHFR100-N
YHDA :	LME01-d100
(g) :	6
C(kgf) :	10600
Co(kgf) :	100

介绍:

Model	Production standard	Shell			rolling ball		Retainer		Accessory (seal) material	
		Material	Hardness (HRC)	Surface treatment	Material	Hardness (HRC)	Material	Using temperature	Skeleton	Rubber
LMF	GB/T16940-2012	GCr15	60 ~ 64	-	GCr15	61 ~ 66	resin	-20 ~ 150	65Mn	-
LMF UU	GB/T16940-2012	GCr15	60 ~ 64	-	GCr15	61 ~ 66	Resin	-20 ~ 80	65Mn	Nitrile rubber
LMF AUU	GB/T16940-2012	GCr15	60 ~ 64	Electroless nickel plating	GCr15	61 ~ 66	Resin	-20 ~ 80	65Mn	Nitrile rubber
LMF M	GB/T16940-2012	GCr15	60 ~ 64	-	GCr15	61 ~ 66	304 stainless steel	-20 ~ 150	65Mn	-

---

LMF AM	GB/T16940-201 2	GCr15	60 ~ 64	Electroless nickel plating	GCr15	61 ~ 66	304 stainless steel	-20 ~ 150	65Mn	-
-----------	--------------------	-------	---------	----------------------------------	-------	---------	---------------------------	-----------	------	---