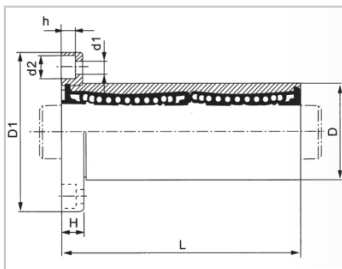
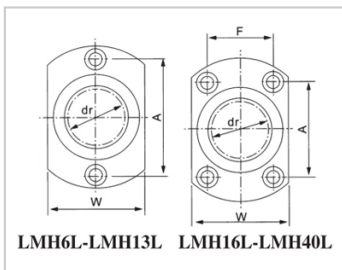


Linear flange bearing series

LMH L-LMH25LLHFCW25-NLMG21-d25

参数信息:



Model No. :

YTP :	LMH25L
MISUMI :	LHFCW2 5-N
YHDA :	LMG21-d 25

NUMBER OF BALL  
ROWS :

Column :	6
----------	---

Weight :

(g) :	525
-------	-----

Boundary  
dimensions :

INSCRIBED CIRCLE DIAMETER dr :	25
Inscribed Circle DiameterTolerance :	0 -0.012
OUTER DIAMETERD :	40
Outer DiameterTolerance :	0 -0.019
Length L :	112
LENGTH TOLERANCE :	± 0.3
Flange D1 :	62
FLRNGE W :	46
Flange H :	8
FLRNGE A :	40
FLRNGE F :	32
HOLE FOR ATTACHMENT d1 :	5.5
HOLE FOR ATTACHMENT d2 :	9

HOLE FOR ATTACHMENT h :	5.1
SOUAR- ENESS :	0.02
Eccentricity (MAX.) :	0.02
Basic Load Rating :	
C(kgf) :	159
Co(kgf) :	320

介绍:

Model	Production standard	Shell			rolling ball		Retainer		Accessory (seal) material	
		Material	Hardness (HRC)	Surface treatment	Material	Hardness (HRC)	Material	Using temperature	Skeleton	Rubber
LMH L	GB/T16940-2012	GCr15	60 ~ 64	-	GCr15	61 ~ 66	resin	-20 ~ 150	65Mn	-
LMH LUU	GB/T16940-2012	GCr15	60 ~ 64	-	GCr15	61 ~ 66	Resin	-20 ~ 80	65Mn	Nitrile rubber
LMH LAUU	GB/T16940-2012	GCr15	60 ~ 64	Electroless nickel plating	GCr15	61 ~ 66	Resin	-20 ~ 80	65Mn	Nitrile rubber
LMH LM	GB/T16940-2012	GCr15	60 ~ 64	-	GCr15	61 ~ 66	304 stainless steel	-20 ~ 150	65Mn	-
LMH LAM	GB/T16940-2012	GCr15	60 ~ 64	Electroless nickel plating	GCr15	61 ~ 66	304 stainless steel	-20 ~ 150	65Mn	-