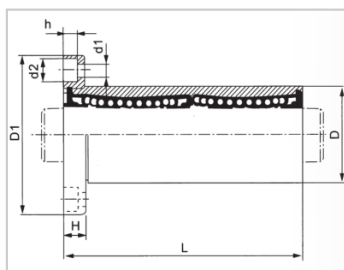
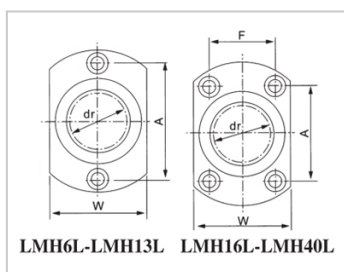


Linear flange bearing series

LMH L-LMH35LLHFCW35-NLMG21-d35

参数信息:



Model No. :

YTP :	LMH35L
MISUMI :	LHFCW3 5-N
YHDA :	LMG21-d 35

NUMBER OF BALL  
ROWS :

Column :	6
----------	---

Weight :

(g) :	960
-------	-----

Boundary  
dimensions :

INSCRIBED CIRCLE DIAMETER dr :	35
Inscribed Circle DiameterTolerance :	0 -0.015
OUTER DIAMETERD :	52
Outer DiameterTolerance :	0 -0.022
Length L :	135
LENGTH TOLERANCE :	± 0.3
Flange D1 :	82
FLRNGE W :	58
Flange H :	10
FLRNGE A :	55
FLRNGE F :	38
HOLE FOR ATTACHMENT d1 :	6.6
HOLE FOR ATTACHMENT d2 :	11

HOLE FOR ATTACHMENT h :	6.1
SOUAR- ENESS :	0.025
Eccentricity (MAX.) :	0.025
Basic Load Rating :	
C(kgf) :	270
Co(kgf) :	640

介绍:

Model	Production standard	Shell			rolling ball		Retainer		Accessory (seal) material	
		Material	Hardness (HRC)	Surface treatment	Material	Hardness (HRC)	Material	Using temperature	Skeleton	Rubber
LMH L	GB/T16940-2012	GCr15	60 ~ 64	-	GCr15	61 ~ 66	resin	-20 ~ 150	65Mn	-
LMH LUU	GB/T16940-2012	GCr15	60 ~ 64	-	GCr15	61 ~ 66	Resin	-20 ~ 80	65Mn	Nitrile rubber
LMH LAUU	GB/T16940-2012	GCr15	60 ~ 64	Electroless nickel plating	GCr15	61 ~ 66	Resin	-20 ~ 80	65Mn	Nitrile rubber
LMH LM	GB/T16940-2012	GCr15	60 ~ 64	-	GCr15	61 ~ 66	304 stainless steel	-20 ~ 150	65Mn	-
LMH LAM	GB/T16940-2012	GCr15	60 ~ 64	Electroless nickel plating	GCr15	61 ~ 66	304 stainless steel	-20 ~ 150	65Mn	-