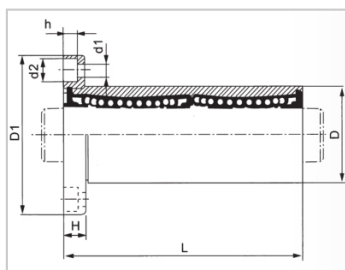
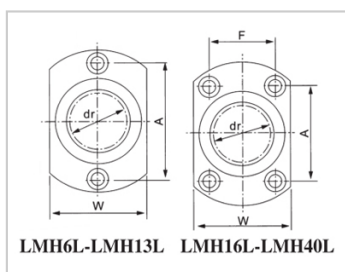


Linear flange bearing series

LMH L-LMH40LLHFCW40-NLMG21-d40

参数信息:



Model No. :

| | |
|----------|---------------|
| YTP : | LMH40L |
| MISUMI : | LHFCW4 0-N |
| YHDA : | LMG21-d 40 |

NUMBER OF BALL
ROWS :

| | |
|----------|---|
| Column : | 6 |
|----------|---|

Weight :

| | |
|-------|------|
| (g) : | 1410 |
|-------|------|

Boundary
dimensions :

| | |
|---|----------|
| INSCRIBED CIRCLE DIAMETER dr : | 40 |
| Inscribed Circle DiameterTolerance : | 0 -0.015 |
| OUTER DIAMETERD : | 60 |
| Outer DiameterTolerance : | 0 -0.022 |
| Length L : | 151 |
| LENGTH TOLERANCE : | ± 0.3 |
| Flange D1 : | 96 |
| FLRNGE W : | 66 |
| Flange H : | 13 |
| FLRNGE A : | 64 |
| FLRNGE F : | 45 |
| HOLE FOR ATTACHMENT d1 : | 9 |
| HOLE FOR ATTACHMENT d2 : | 14 |

| | |
|-------------------------|-------|
| HOLE FOR ATTACHMENT h : | 8.1 |
| SOUAR- ENESS : | 0.025 |
| Eccentricity (MAX.) : | 0.025 |
| Basic Load Rating : | |
| C(kgf) : | 350 |
| Co(kgf) : | 820 |

介绍:

| Model | Production standard | Shell | | | rolling ball | | Retainer | | Accessory (seal) material | |
|----------|---------------------|----------|----------------|----------------------------|--------------|----------------|---------------------|-------------------|---------------------------|----------------|
| | | Material | Hardness (HRC) | Surface treatment | Material | Hardness (HRC) | Material | Using temperature | Skeleton | Rubber |
| LMH L | GB/T16940-2012 | GCr15 | 60 ~ 64 | - | GCr15 | 61 ~ 66 | resin | -20 ~ 150 | 65Mn | - |
| LMH LUU | GB/T16940-2012 | GCr15 | 60 ~ 64 | - | GCr15 | 61 ~ 66 | Resin | -20 ~ 80 | 65Mn | Nitrile rubber |
| LMH LAUU | GB/T16940-2012 | GCr15 | 60 ~ 64 | Electroless nickel plating | GCr15 | 61 ~ 66 | Resin | -20 ~ 80 | 65Mn | Nitrile rubber |
| LMH LM | GB/T16940-2012 | GCr15 | 60 ~ 64 | - | GCr15 | 61 ~ 66 | 304 stainless steel | -20 ~ 150 | 65Mn | - |
| LMH LAM | GB/T16940-2012 | GCr15 | 60 ~ 64 | Electroless nickel plating | GCr15 | 61 ~ 66 | 304 stainless steel | -20 ~ 150 | 65Mn | - |