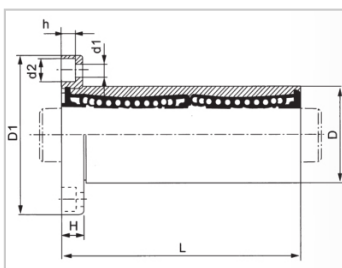
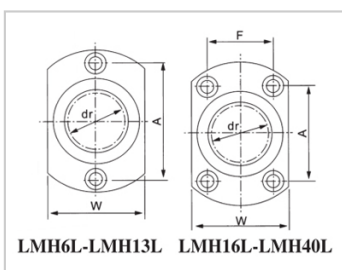


Linear flange bearing series

LMH L-LMH50LLHFCW50-NLMG21-d50

参数信息:



Model No. :

YTP :	LMH50L
MISUMI :	LHFCW50-N
YHDA :	LMG21-d50

NUMBER OF BALL ROWS :

Column :	6
----------	---

Weight :

(g) :	3450
-------	------

Boundary dimensions :

INSCRIBED CIRCLE DIAMETER dr :	50
Inscribed Circle Diameter Tolerance :	0-0.015
OUTER DIAMETER D :	80
Outer Diameter Tolerance :	0-0.022
Length L :	192
LENGTH TOLERANCE :	± 0.3
Flange D1 :	116
FLRNGE W :	86
Flange H :	13
FLRNGE A :	80
FLRNGE F :	56
HOLE FOR ATTACHMENT d1 :	9
HOLE FOR ATTACHMENT d2 :	14

HOLE FOR ATTACHMENT h :	8.1
SOUAR- ENESS :	0.025
Eccentricity (MAX.) :	0.025
Basic Load Rating :	
C(kgf) :	608
Co(kgf) :	1590

介绍:

Model	Production standard	Shell			rolling ball		Retainer		Accessory (seal) material	
		Material	Hardness (HRC)	Surface treatment	Material	Hardness (HRC)	Material	Using temperature	Skeleton	Rubber
LMH L	GB/T16940-2012	GCr15	60 ~ 64	-	GCr15	61 ~ 66	resin	-20 ~ 150	65Mn	-
LMH LUU	GB/T16940-2012	GCr15	60 ~ 64	-	GCr15	61 ~ 66	Resin	-20 ~ 80	65Mn	Nitrile rubber
LMH LAUU	GB/T16940-2012	GCr15	60 ~ 64	Electroless nickel plating	GCr15	61 ~ 66	Resin	-20 ~ 80	65Mn	Nitrile rubber
LMH LM	GB/T16940-2012	GCr15	60 ~ 64	-	GCr15	61 ~ 66	304 stainless steel	-20 ~ 150	65Mn	-
LMH LAM	GB/T16940-2012	GCr15	60 ~ 64	Electroless nickel plating	GCr15	61 ~ 66	304 stainless steel	-20 ~ 150	65Mn	-