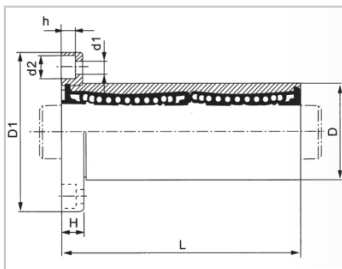
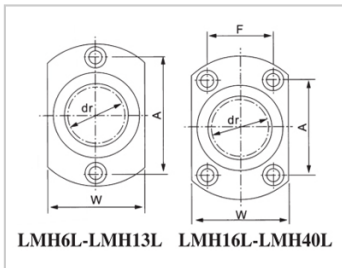
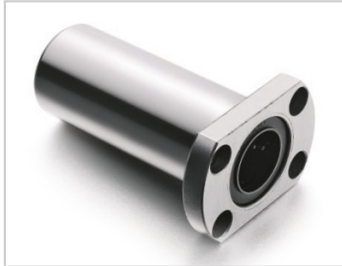


Linear flange bearing series

LMH L-LMH5L LHFCW5-NLMG21-d5

参数信息:



Model No. :

YTP :	LMH5L
MISUMI :	LHFCW5-N
YHDA :	LMG21-d5

NUMBER OF BALL ROWS :

Column :	4
----------	---

Weight :

(g) :	22
-------	----

Boundary dimensions :

INSCRIBED CIRCLE DIAMETER dr :	5
Inscribed Circle DiameterTolerance :	0-0.008
OUTER DIAMETERD :	10
Outer DiameterTolerance :	0-0.011
Length L :	28
LENGTH TOLERANCE :	± 0.3
Flange D1 :	25
FLRNGE W :	16
Flange H :	5
FLRNGE A :	17
FLRNGE F :	
HOLE FOR ATTACHMENT d1 :	3.5
HOLE FOR ATTACHMENT d2 :	6

HOLE FOR ATTACHMENT h :	3.1
SOUAR- ENESS :	0.012
Eccentricity (MAX.) :	0.012
Basic Load Rating :	
C(kgf) :	26.1
Co(kgf) :	41.2

介绍:

Model	Production standard	Shell			rolling ball		Retainer		Accessory (seal) material	
		Material	Hardness (HRC)	Surface treatment	Material	Hardness (HRC)	Material	Using temperature	Skeleton	Rubber
LMH L	GB/T16940-2012	GCr15	60 ~ 64	-	GCr15	61 ~ 66	resin	-20 ~ 150	65Mn	-
LMH LUU	GB/T16940-2012	GCr15	60 ~ 64	-	GCr15	61 ~ 66	Resin	-20 ~ 80	65Mn	Nitrile rubber
LMH LAUU	GB/T16940-2012	GCr15	60 ~ 64	Electroless nickel plating	GCr15	61 ~ 66	Resin	-20 ~ 80	65Mn	Nitrile rubber
LMH LM	GB/T16940-2012	GCr15	60 ~ 64	-	GCr15	61 ~ 66	304 stainless steel	-20 ~ 150	65Mn	-
LMH LAM	GB/T16940-2012	GCr15	60 ~ 64	Electroless nickel plating	GCr15	61 ~ 66	304 stainless steel	-20 ~ 150	65Mn	-