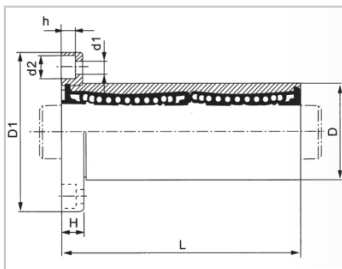
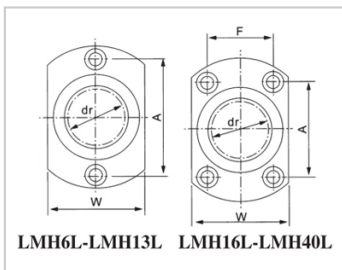


Linear flange bearing series

LMH L-LMH8LLHFCW8-NLMG21-d8

参数信息:



Model No. :

YTP :	LMH8L
MISUMI :	LHFCW8-N
YHDA :	LMG21-d8

NUMBER OF BALL ROWS :

Column :	4
----------	---

Weight :

(g) :	47
-------	----

Boundary dimensions :

INSCRIBED CIRCLE DIAMETER dr :	8
Inscribed Circle Diameter Tolerance :	0 -0.010
OUTER DIAMETER D :	15
Outer Diameter Tolerance :	0 -0.013
Length L :	45
LENGTH TOLERANCE :	± 0.3
Flange D1 :	32
FLRNGE W :	21
Flange H :	5
FLRNGE A :	24
FLRNGE F :	
HOLE FOR ATTACHMENT d1 :	3.5
HOLE FOR ATTACHMENT d2 :	6

HOLE FOR ATTACHMENT h :	3.1
SOUAR- ENESS :	0.015
Eccentricity (MAX.) :	0.015
Basic Load Rating :	
C(kgf) :	44
Co(kgf) :	80

介绍:

Model	Production standard	Shell			rolling ball		Retainer		Accessory (seal) material	
		Material	Hardness (HRC)	Surface treatment	Material	Hardness (HRC)	Material	Using temperature	Skeleton	Rubber
LMH L	GB/T16940-2012	GCr15	60 ~ 64	-	GCr15	61 ~ 66	resin	-20 ~ 150	65Mn	-
LMH LUU	GB/T16940-2012	GCr15	60 ~ 64	-	GCr15	61 ~ 66	Resin	-20 ~ 80	65Mn	Nitrile rubber
LMH LAUU	GB/T16940-2012	GCr15	60 ~ 64	Electroless nickel plating	GCr15	61 ~ 66	Resin	-20 ~ 80	65Mn	Nitrile rubber
LMH LM	GB/T16940-2012	GCr15	60 ~ 64	-	GCr15	61 ~ 66	304 stainless steel	-20 ~ 150	65Mn	-
LMH LAM	GB/T16940-2012	GCr15	60 ~ 64	Electroless nickel plating	GCr15	61 ~ 66	304 stainless steel	-20 ~ 150	65Mn	-