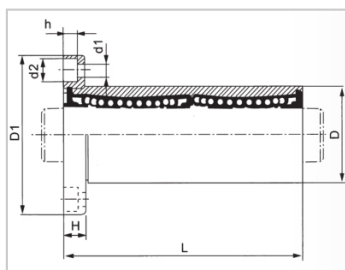
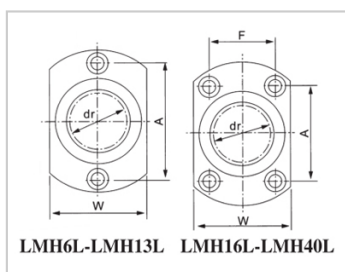


Linear flange bearing series

LMH L-LMH12LLHFCW12-N|LMG21-d12

参数信息:



Model No. :

YTP :	LMH12L
MISUMI :	LHFCW1 2-N
YHDA :	LMG21-d 12

NUMBER OF BALL  
ROWS :

Column :	4
----------	---

Weight :

(g) :	102
-------	-----

Boundary  
dimensions :

INSCRIBED CIRCLE DIAMETER dr :	12
Inscribed Circle DiameterTolerance :	0 -0.010
OUTER DIAMETERD :	21
Outer DiameterTolerance :	0 -0.016
Length L :	57
LENGTH TOLERANCE :	± 0.3
Flange D1 :	42
FLRNGE W :	27
Flange H :	6
FLRNGE A :	32
FLRNGE F :	
HOLE FOR ATTACHMENT d1 :	4.5
HOLE FOR ATTACHMENT d2 :	7.5

HOLE FOR ATTACHMENT h :	4.1
SOUAR- ENESS :	0.015
Eccentricity (MAX.) :	0.015
Basic Load Rating :	
C(kgf) :	83
Co(kgf) :	160

介绍:

Model	Production standard	Shell			rolling ball		Retainer		Accessory (seal) material	
		Material	Hardness (HRC)	Surface treatment	Material	Hardness (HRC)	Material	Using temperature	Skeleton	Rubber
LMH L	GB/T16940-2012	GCr15	60 ~ 64	-	GCr15	61 ~ 66	resin	-20 ~ 150	65Mn	-
LMH LUU	GB/T16940-2012	GCr15	60 ~ 64	-	GCr15	61 ~ 66	Resin	-20 ~ 80	65Mn	Nitrile rubber
LMH LAUU	GB/T16940-2012	GCr15	60 ~ 64	Electroless nickel plating	GCr15	61 ~ 66	Resin	-20 ~ 80	65Mn	Nitrile rubber
LMH LM	GB/T16940-2012	GCr15	60 ~ 64	-	GCr15	61 ~ 66	304 stainless steel	-20 ~ 150	65Mn	-
LMH LAM	GB/T16940-2012	GCr15	60 ~ 64	Electroless nickel plating	GCr15	61 ~ 66	304 stainless steel	-20 ~ 150	65Mn	-