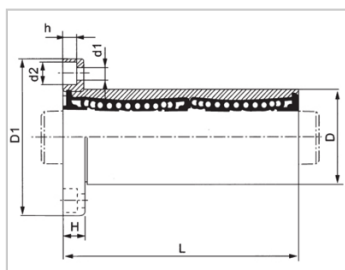
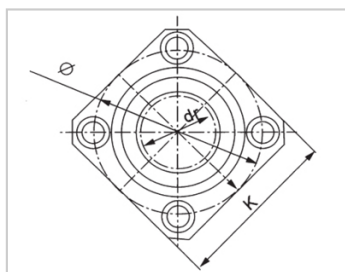


Linear flange bearing series

LMEK LUU-LMEK10LUUKBK10GWUU

参数信息:



Model No. :

YTP :	LMEK10L UU
NB :	KBK10G WUU
SAMICK :	LMEK10L UU

NUMBER OF BALL  
ROWS :

Column :	4
----------	---

Weight :

(g) :	79
-------	----

Boundary  
dimensions :

INSCRIBED CIRCLE DIAMETER $d_r$ :	10
Inscribed Circle Diameter Tolerance :	+0.009 -0.001
OUTER DIAMETER $D$ :	19
Outer Diameter Tolerance :	0 -0.011
Length $L$ :	55
LENGTH TOLERANCE :	$\pm 0.3$
Flange $D_1$ :	40
Flange $K$ :	30
Flange $H$ :	6
Flange :	29
HOLE FOR ATTACHMENT $d_1$ :	4.5
HOLE FOR ATTACHMENT $d_2$ :	7.5
HOLE FOR	4.1

ATTACHMENT h :

SOUAR- ENESS : 0.015

Eccentricity (MAX.) : 0.015

Basic Load Rating :

C(kgf) : 60

Co(kgf) : 112

介绍:

Model No.	Producti on Standards	Outer Coving			Balls		Retainer		Seals Material	
		Material	Hardness ( HRC )	Treatmen t Of Surfaces	Material	Hardness ( HRC )	Material	Holder Working Temperature	Skeleton	Rubber
LMEK LUU	GB/T169 40-2012	GCr15	60 ~ 64	-	GCr15	61 ~ 66	Resin	-20 ~ 80	65Mn	Nitrile Rubber
LMEK LAUU	GB/T169 40-2012	GCr15	60 ~ 64	Electroless Nickel Plating	GCr15	61 ~ 66	Resin	-20 ~ 80	65Mn	Nitrile Rubber