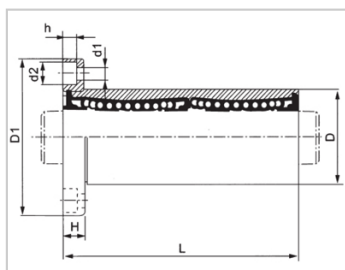
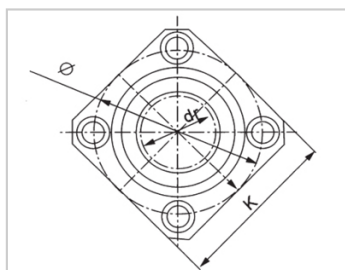


Linear flange bearing series

LMEK LUU-LMEK16LUUKBK16GWUU

参数信息:



Model No. :

YTP :	LMEK16L UU
NB :	KBK16G WUU
SAMICK :	LMEK16L UU

NUMBER OF BALL
ROWS :

Column :	5
----------	---

Weight :

(g) :	135
-------	-----

Boundary
dimensions :

INSCRIBED CIRCLE DIAMETER d_r :	16
Inscribed Circle Diameter Tolerance :	+0.011 -0.001
OUTER DIAMETER D :	26
Outer Diameter Tolerance :	0 -0.011
Length L :	68
LENGTH TOLERANCE :	± 0.3
Flange D_1 :	46
Flange K :	35
Flange H :	6
Flange :	36
HOLE FOR ATTACHMENT d_1 :	4.5
HOLE FOR ATTACHMENT d_2 :	7.5
HOLE FOR	4.1

ATTACHMENT h :

SOUAR- ENESS : 0.015

Eccentricity (MAX.) : 0.015

Basic Load Rating :

C(kgf) : 94

Co(kgf) : 182

介绍:

Model No.	Producti on Standards	Outer Coving			Balls		Retainer		Seals Material	
		Material	Hardness (HRC)	Treatmen t Of Surfaces	Material	Hardness (HRC)	Material	Holder Working Temperature	Skeleton	Rubber
LMEK LUU	GB/T169 40-2012	GCr15	60 ~ 64	-	GCr15	61 ~ 66	Resin	-20 ~ 80	65Mn	Nitrile Rubber
LMEK LAUU	GB/T169 40-2012	GCr15	60 ~ 64	Electroless Nickel Plating	GCr15	61 ~ 66	Resin	-20 ~ 80	65Mn	Nitrile Rubber